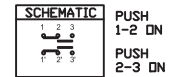
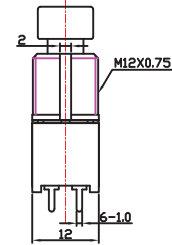
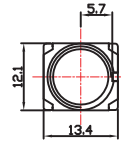
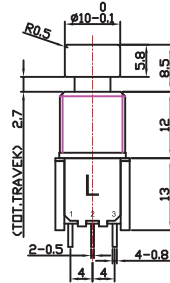


FOOT SWITCH

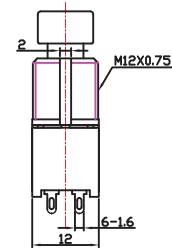
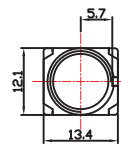
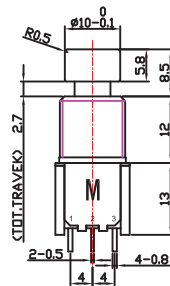


GENIUS

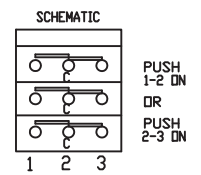
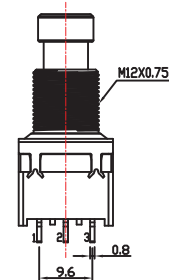
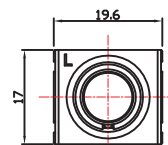
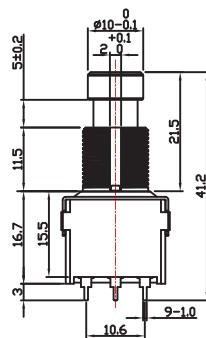
SF12P-0202-20R-L



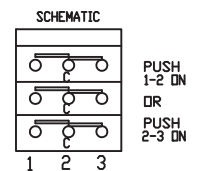
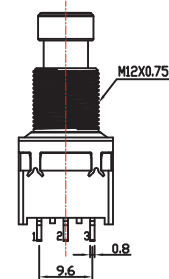
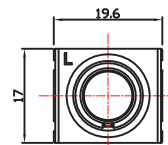
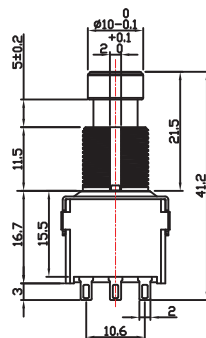
SF12N-0202-20R-M



SF17P-0302-21R-L



SF17N-0302-21R-L



Electrical specifications 電氣特性

	SF12	SF17
Rated power 定格電力	125V AC 6A 250V AC 3A 30V DC 4A	9V DC 4A
Contact resistance 接觸阻抗	50mΩ max.	Initial:<30mΩ After test:<100mΩ
Insulation resistance 絕緣阻抗	DC 500V-100MΩ min.	Initial:DC 500V-100MΩ min. After humidity test: DC 500V-50MΩ min.
Withstand voltage 耐電壓	AC 1000V-1 minute	AC 500V-1 minute

Mechanical specifications 機械特性

	SF12	SF17
Operating force 作動力	L:1.6±0.5kgf M:2.8±0.8kgf	3.0±1.0kgf
Push-pull strength of shaft 軸推拉強度	8.0kgf min	8.0kgf min
Bushing nut tightening strength 軸套螺牙強度	8.0kgf min	8.0kgf min
Terminal strength 端子強度	1.0kgf min	1.0kgf min
Rotational life 回轉壽命	L:10,000 cycles M:20,000 cycles	30,000 cycles